

# Winkelgelenke SA

## BEM25-60-501-DURBAL - BEM25-60-501-DURBAL

<https://www.123kugellager.de/kugellager-gehauselager/gelenkkopfe-gelenklager/sa/bem25-60-501-durbal>

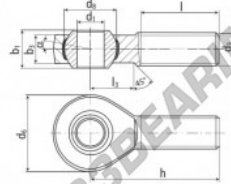
### BEM25-60-501



male thread;  
maintenance free,  
adapter sizes  
according to  
DIN ISO 12240-4,  
series K



**DURBAL® heavy-duty rod ends  
with integral spherical  
plain bearing in stainless steel**



rod end housing:  
stainless steel 1.4301, rolled thread,  
surface with pickling treatment

joint ball:  
stainless steel, hardened and ground,  
surface superfinished

race:  
nylon / teflon / glass fibre compound

tolerances:  
see page 10

order number		measurements [mm]		measurements [mm]		weight		basic load rating	
type	right-hand thread	d <sub>1</sub>	d <sub>2</sub>	d <sub>4</sub>	d <sub>6</sub>	b <sub>1</sub>	b <sub>2</sub>	dyn.	stat.
BEM 25 -60	-501	25	M 24 x 2	60	42,80	31	22,0		
measurements [mm]		weight		basic load rating		dyn.		stat.	
type	h	l	l <sub>3</sub>	α <sub>1</sub> <sup>1</sup>	α <sub>2</sub> <sup>2</sup>	[kg]	[N]	[N]	[N]
BEM 25	94	57	30	15,0	10,0	0,630	27860	79100	

## PRODUKTMERKMALE

Marke	DURBAL
N° Ean13	3663952509877
Innendurchmesser	25 mm
Außendurchmesser	60 mm
Dicke	31 mm
Typ	SA
Gewicht	630 g
Gewinde	Rechtsgewinde
Schmierung	ohne
Verpackung	1

[kontakt@123kugellager.de](mailto:kontakt@123kugellager.de)

0800 001 076 6

CRT4 de Lesquin 60 Rue Du Haut De Sainghin 59273 Fretin FRANCE